

O‘ZBEKISTON RESPUBLIKASI VAZIRLAR MAHKAMASI
DAVLAT TEST MARKAZI

REPITISION TEST TOPSHIRUVCHILAR UCHUN

SAVOLLAR KITOBI

ABITURIYENT: _____ F.I.O. _____ Imzo _____

ABITURIYENT DIQQATIGA!

Test topshiriqlarini yechishdan avval savollar kitobini varaqlab, unda har bir fan bo‘yicha 36 ta savol mavjudligini tekshiring. Agar savollar soni kamligi aniqlansa yoki savollar savollar kitobi raqami bilan javoblar varag‘i raqami bir xil bo‘lmasa, darhol auditoriya rahbariga ma’lum qiling.

Savollar kitobida abituriyentning familiyasi, ismi, otasining ismi xato to‘ldirilgan yoki to‘ldirilmagan, va imzosi qo‘yilmagan hollarda e’tirozi ko‘rib chiqilmaydi.

Kitob tipi: **55 (636624)**

FANLAR:

Blok 1: Matematika (informatika bilan)

Blok 2: Fizika

Blok 3: Ingliz tili

Savollar kitobi raqami: **1000078**

Toshkent – 2014

MATEMATIKA (INFORMATIKA BILAN)

1. To'g'ri burchakli trapetsiyaning bitta burchagi 60° , katta asosi 12 sm ga teng. Agar trapetsiyaning kichik diagonali katta asosiga teng bo'lsa, diagonallar o'rtalarini tutashtiruvchi kesma uzunligini (sm) toping.
A) 8 B) 4 C) 5 D) 3
2. Omonatchi bankga 25000 so'm pul qo'ydi. Oradan 3 yil o'tgach, u o'ziga tegishli hamma pulni qaytarib oldi. Agar bank yiliga 5% foyda to'lasa, omonatchi bankdan necha so'm pul olgan?
A) 59490,235 B) 28000,125 C) 28940,625 D) 27941
3. ABC uchburchakda $a=3$; $b=5$; $\angle C=60^\circ$ bo'lsa, c ni toping.
A) $\sqrt{17}$ B) $\sqrt{23}$ C) $\sqrt{19}$ D) $\sqrt{21}$
4. To'g'ri burchakli uchburchakning gipotenuzasi c ga, unga ichki chizilgan aylana radiusi r ga teng bo'lsa, uchburchakning yuzini toping.
A) $2cr$ B) $c^2 + cr$ C) $r^2 + c^2$ D) $r^2 + cr$
5. Kubga ichki chizilgan silindrning hajmi 16π ga teng. Shu kubga tashqi chizilgan sferaning yuzini toping.
A) 48π B) 24π C) 32π D) 64π
6. $\sin x = \cos 2x$ tenglamani yeching.
A) $\frac{\pi}{6} + \frac{2\pi k}{3}$, $k \in Z$
B) $\frac{\pi}{6} + \frac{\pi k}{3}$, $k \in Z$
C) $\frac{\pi}{3} + \frac{2\pi k}{3}$, $k \in Z$
D) $\frac{2\pi}{3} + \frac{\pi k}{3}$, $k \in Z$
7. $\sqrt{5x-1} + \frac{6}{\sqrt{5x-1}} = \sqrt{5x+15}$ tenglamaning katta ildizi m va ildizlarining soni n bo'lsa, $m+n$ ni toping.
A) 8 B) 3 C) 4 D) 6
8. Velosipedchi bir soatda 15,75 km, piyoda esa $4\frac{1}{2}$ km yo'l bosadi. Velosipedchining tezligi piyodaning tezligidan necha marta ortiq?
A) 11,25 B) 3,5 C) 11,5 D) 3,75
9. Agar $|\vec{AB}| = |\vec{AC}| = |\vec{AB} + \vec{AC}| = 4$ bo'lsa, $|\vec{CB}|$ ning qiymatini toping.
A) $4\sqrt{2}$ B) 4,5 C) $4\sqrt{3}$ D) $2\sqrt{3}$
10. $\log_2(x^2 + 2x + 4) + \log_2(x - 2) < \log_2(x^3 - x^2 + 4x - 3)$ tengsizlikni yeching.
A) (1; 5) B) (-1; 2) C) (-1; 5) D) (2; 5)
11. Balandligi asosining diametriga teng silindrning yon sirti 16π ga teng. Silindr asosining diametrini toping.
A) 2 B) 1 C) 8 D) 4
12. $\frac{x^2 - (m-4)x - 4m}{x^2 + (1-m)x - m}$ ni hisoblang.
A) $\frac{x-4}{x-1}$ B) $\frac{x+4}{x+1}$ C) $\frac{x-1}{x+2}$ D) $\frac{x-4}{x-2}$
13. x, y butun sonlar uchun $-12 \leq x < 13$, $-9 < y \leq 6$ va $x + y \neq 0$ bo'lsa, $\frac{x-y}{x+y}$ ning eng katta qiymatini toping.
A) 18 B) 20 C) 14 D) 17
14. ABC uchburchakda BH -balandlik, CM -mediana, $MH=12$ bo'lsa, AB ni toping.
A) 24 B) 20 C) 28 D) 12
15. Tekislikdan h uzoqlikda joylashgan nuqtadan tekislikka o'tkazilgan va tekislik bilan 30° li burchak hosil qiladigan og'maning uzunligini toping.
A) $\sqrt{2}h$ B) $1,5h$ C) $\sqrt{3}h$ D) $2h$
16. m dan katta bo'lmagan juft natural sonlarning yig'indisi x , m dan katta bo'lmagan, lekin 10 dan katta bo'lgan juft sonlarning yig'indisi y hamda $x + y = 810$ bo'lsa, m ning barcha qiymatlari yig'indisini toping.
A) 210 B) 81 C) 420 D) 83
17. $f(x) = \cos x + e^x$, $F(x) = ?$
A) $\sin x - \frac{1}{x}e^x + c$ B) $-\sin x + e^x + c$
C) $\sin x + e^x + c$ D) $-\cos x + e^x + c$

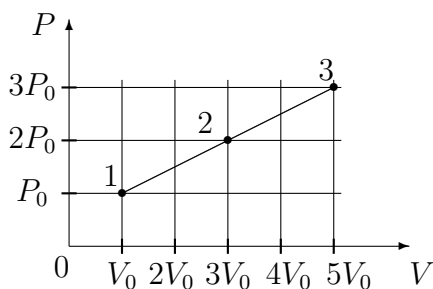
18. $\frac{2}{\sqrt{10} + \sqrt{15} + \sqrt{14} + \sqrt{21}}$ kasrning maxrajini irratsionallikdan qutqaring.
- A) $\sqrt{10} + \sqrt{15} + \sqrt{14} - \sqrt{21}$
 B) $\sqrt{10} - \sqrt{15} + \sqrt{21} + \sqrt{14}$
 C) $\sqrt{10} - \sqrt{15} + \sqrt{14} - \sqrt{21}$
 D) $\sqrt{10} - \sqrt{15} + \sqrt{21} - \sqrt{14}$
19. Agar uch xonali sondan 6 ni ayirsak, ayirma 7 ga bo'linadi, 7 ni ayirsak, ayirma 8 ga bo'linadi, 8 ni ayirsak, ayirma 9 ga bo'linadi. Bu sonni toping.
- A) 167 B) 503 C) 143 D) 936
20. $\frac{(x^2 + x + 1)x^2}{x^2 - 5x + 6} < 0$ tengsizlikni yeching.
- A) $(-\infty; 2] \cup [3; \infty)$
 B) $[2; 3]$
 C) $(-\infty; 2]$
 D) $(2; 3)$
21. Radiuslari 2 va 3 ga teng bo'lgan aylanalar bir-biriga tashqi ravishda urinadi. Ularning ikkalasi uchinchi aylanaga ichki ravishda urinsa va markazlari bitta to'g'ri chiziqda yotsa, tashqi aylananing ichki aylanalardan bo'sh qolgan sohasi yuzini toping.
- A) 12π B) 6π C) 9π D) 4π
22. $2^{x^2+1} = 1 - x^8$ tenglamani yeching.
- A) tenglama ildizga ega emas B) 2 C) 1
 D) -1
23. $\frac{\sqrt{x^2 - 3x + 2}}{4x - x^2 - 3} \geq 0$
- A) $[2; 3)$ B) $(0; 1)$ C) $(0; \infty)$ D) $[0; 2)$
24. $y = \log_{0,5} x$ funksiyaga teskari funksiyani toping.
- A) $x = \log_{0,5} y$ B) $y = (0,5)^x$ C) $x = \log_2 y$
 D) $x = (0,5)^y$
25. $(x - 1)^2(x^2 - 2x) = 12$ tenglamaning haqiqiy ildizlari yig'indisini toping.
- A) 3 B) 0 C) 2 D) 4
26. Radiusi R ga teng bo'lgan doiraning markazidan bir tomonda ikkita bir-biriga parallel vatar o'tkazildi. Bunda ulardan biri 120° li, ikkinchisi 60° li yoylarni tortib tursa, vatarlar orasida joylashgan maydon yuzini toping.
- A) $\frac{\pi R^2}{6}$ B) $\frac{\pi R^2}{3}$ C) $\frac{\pi R^2}{4}$ D) $\frac{5\pi R^2}{8}$
27. Rombning tomoni 4 ga, o'tkir burchagi 30° ga teng bo'lsa, unga ichki chizilgan aylananing uzunligini toping.
- A) $\frac{\pi}{2}$ B) 2π C) π D) 4π
28. $\sqrt{3x^2 + 7x + 2} - \sqrt{2x^2 + 3x - 2} = \sqrt{x^2 + 2x}$ tenglama ildizlarining yig'indisini toping.
- A) -2 B) -3 C) -1 D) 3
29. $ax = by = cz = 6$ va $x + y + z = 36$ ekani ma'lum bo'lsa, $\frac{1}{a} + \frac{1}{b} + \frac{1}{c}$ ni toping.
- A) 12 B) 6 C) 9 D) 5
30. $f(x) = x^2 + x - 1$ funksiya uchun $f'(x) = 0$ bo'lsa, x ning qiymatini toping.
- A) $-\frac{1}{2}$ B) $-\frac{3}{4}$ C) $-\frac{2}{3}$ D) $\frac{1}{3}$
31. Yunonlar foydalangan hisoblash vositasi nomini aniqlang.
- A) Abak B) Serobyan C) Suan-pan
 D) Cho't
32. Protsessorlardan ma'lumotlarni baytlarda olib, qurilmalarga bitlarda uzatadigan port turini aniqlang.
- A) parallel B) ketma-ket C) slot
 D) shina
33. Windows yo'lboshlovchisini ishga tushirish uchun Пуск menyusidagi qaysi bo'lim tanlanadi?
- A) Программы B) Документы C) Найти
 D) Настройка
34. MS Excel 2003 da berilgan shartni qanoatlantiruvchi satrlarni ajratib olish amali qanday ataladi?
- A) filtrlash B) tartiblash C) avtofiltr
 D) hisobga olish

35. Elektron pochta manziliga oid mulohazalardan xatosini aniqlang.
- A) *E-mail manzilida @ belgisi ishtirok etmaydi*
 B) *E-mail manzilida probel (bo'shliq) belgisi ishtirok etmaydi*
 C) *E-mail manzilida raqamlar ishtirok etadi*
 D) *E-mail manzilida lotin harflari ishtirok etadi*
36. Paskal dasturi lavhasidagi natijani aniqlang. begin X:=2; p:=1; 1:P:=P*(2*x-2); X:=X+3; if X<=6 then goto 1; writeln(P); end.
- A) 16 B) 20 C) 2 D) 24

FIZIKA

1. Tinch holatidan boshlab tekis tezlanuvchan harakat qilayotgan jismning 12-sekundda bosib o'tgan yo'li 4-sekundda bosib o'tgan yo'lidan necha marta farq qiladi?
- A) 9 B) 23/5 C) 23/9 D) 23/7
2. Bosim 100 Pa, molekullari konsentratsiyasi 10^{25} m^{-3} bo'lganda gazning temperaturasini (K) toping.
- A) 650 B) 800 C) 725 D) 500
3. Tebranish konturidagi tebranishlar chastotasini 2 marta orttirish uchun kondensator sig'imini qanday o'zgartirish lozim?
- A) 4 marta orttirish B) 2 marta kamaytirish
 C) 4 marta kamaytirish D) 9 marta orttirish
4. Temperatura ortishi bilan yarimo'tkazgichning qarshiligi ...
- A) o'zgarmaydi B) ortadi C) kamayadi
 D) avval ortadi, keyin kamayadi
5. Temir bo'lagining suvdagi og'irligi 9,8 N, zichligi 7800 kg/m^3 bo'lsa, temir bo'lagining hajmini (sm^3) toping.
- A) 125 B) 1,47 C) 14,7 D) 147
6. Massasi 700 g bo'lgan jismni vertikal ravishda yuqoriga 15 m/s tezlik bilan otildi. U yerga 13 m/s tezlik bilan qaytib tushdi. Havoning qarshiligini yengish uchun bajarilgan ishni (J) hisoblang.
- A) 19,4 B) 19,2 C) 19,6 D) 18,6
7. Elektron vakuumda induksiyasi $5 \cdot 10^{-3} \text{ T}$ bo'lgan bir jinsli magnitoviy maydonda $10 \cdot 10^3 \text{ km/s}$ tezlik va induksiya chiziqlariga perpendikular yo'nalgan holda harakatlanmoqda. Elektroniga ta'sir etuvchi kuchni toping (N)?
- A) $8 \cdot 10^{-15}$ B) $5 \cdot 10^{-15}$ C) $2 \cdot 10^5$
 D) $4 \cdot 10^{-15}$
8. Bir jinsli elektr maydonida α -zarrachasi kuchlanganlik vektorining yo'nalishi bo'ylab ko'chgan bo'lsa uning potensial energiyasi qanday o'zgaradi?
- A) o'zgarmaydi B) kamayadi C) ortqdi
 D) avval ortib so'ngra kamayadi
9. Ko'ndalang kesim yuzasi 20 mm^2 , tok tashuvchi elektronlarining konsentratsiyasi $2 \cdot 10^{22} \text{ sm}^{-3}$ va tartibli harakat tezligi 0,01 mm/s ga teng bo'lgan o'tkazgichning ko'ndalang kesimi orqali 5 minutda o'tgan elektronlar sonini toping.
- A) $2 \cdot 10^{20}$ B) $4 \cdot 10^{21}$ C) $1,2 \cdot 10^{21}$
 D) $2,2 \cdot 10^{21}$
10. Agar shishadan tayyorlangan qavariq linzaning fokus masofasi shu linzaning egrilik radiusiga teng bo'lsa, shishaning sindirish ko'rsatkichi nimaga teng?
- A) 2 B) 1,5 C) 3 D) 1,2
11. Bir xil massali va bir xil temperaturadagi karbonat angidrid va metan gazlarining zichliklari ham teng bo'lishi uchun bosimlari qanday nisbatda bo'lishi kerak?
- A) 1:2 B) 1:5 C) 1:3 D) 1:4
12. Eynshteynning massa bilan energiyaning o'zaro bog'liqlik qonunini ifodalaydigan mashhur formulasini ko'rsating.
- A) $E = mgh$
 B) $E_k = \frac{mv^2}{2}$
 C) $E = mc^2$
 D) $E = IUt$
13. Tezligi $1,9 \cdot 10^7 \text{ m/s}$ bo'lgan α -zarra oltin atomi yadrosi yo'nalishida harakatlanib, yadroga qanday eng kichik masofagacha (m) yaqinlashishi mumkin? α -zarraning massasi $6,6 \cdot 10^{-27} \text{ kg}$, zaryadi $1,3 \cdot 10^{-17} \text{ Kl}$.
- A) $3,8 \cdot 10^{-14}$ B) $4 \cdot 10^{-14}$ C) $3,1 \cdot 10^{-14}$
 D) $4,9 \cdot 10^{-14}$

14. Rasmda bir atomli bir mol ideal gaz ustida amalga oshgan jarayon tasvirlangan. Temperaturalar nisbati T_2/T_1 ni aniqlang.



- A) 15 B) 3 C) 6 D) 5
15. 220 V kuchlanishga mo'ljallangan 100 W li lampochka 110 V kuchlanishga ulansa, qanday quvvat (W) bilan yonadi?
A) 40 B) 25 C) 30 D) 45
16. Agar tormozlanishdagi ishqalanish koeffitsienti 0,4 ga teng bo'lsa, 12 m/s tezlik bilan harakatlanayotgan avtobus qancha vaqtdan (s) keyin to'xtaydi? $g=10 \text{ m/s}^2$
A) 0,3 B) 4 C) 3 D) 30
17. Qanday sharoitda sochuvchi linzaning optik kuchi musbat bo'la oladi? n_1 - atrof muhitning optik zichligi, n_2 - linza yasalgan moddaning optik zichligi.
A) $n_1 > n_2$
B) $n_1 < n_2$
C) sochuvchi linzaning optik zichligi musbat bo'la olmaydi
D) $n_1 = n_2$
18. Tinch turgan liftdagi matematik mayatnik tebranish davri 5 s ga teng. Tezlanish bilan harakatlanayotgan lift dagi mayatnik tebranish davri 10 s ga teng bo'lsa, liftning tezlanishini (m/s^2) aniqlang.
A) 7,5 B) 2,5 C) 5 D) 4
19. Tezligi 10 m/s, massasi 10 kg bo'lgan granata ikki bo'lakka ajraldi. Katta bo'lakning tezligi 25 m/s bo'lib granataning harakat yo'nalishida, kichik bo'lakning tezligi 12,5 m/s bo'lib qarama-qarshi yo'nalishda harakatlansa, bo'laklarning massalarini (kg) toping.
A) 7 va 3 B) 6 va 4 C) 8 va 2 D) 9 va 1

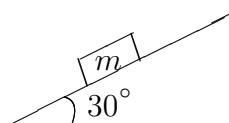
20. Prujining bikrligi 40 N/m ga teng bo'lsa, unga maxkamlagan 100 g massali jismning tebranish chastotasi (Gs) qanchaga teng bo'ladi?

A) 4 B) 30 C) 0,3 D) 3

21. Massasi 50 kg bo'lgan bola Oy sirtida turibdi deylik. U Oyga qanday kuch (N) bilan tortiladi? $g=1,6 \text{ m/s}^2$

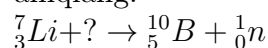
A) 16 B) 50 C) 500 D) 80

22. 6 kg massali jism qiya tekislikdan o'zgarmas tezlik bilan sirpanib tushmoqda. 30 sm masofada bajarilgan ish (J) nimaga teng?



A) 5 B) 2,5 C) 9 D) 6

23. Yadro reaksiyasida tushirib qoldirilgan zarrani aniqlang.



A) α B) n C) γ D) β

24. 12 V kuchlanish tarmog'iga qarshiligi 20 Ω va 40 Ω ga teng bo'lgan rezistorlar ketma-ket ulandi. Ikkinchi rezistorning uchlaridagi potentsiallar farqini (V) toping.

A) 6 B) 8 C) 4 D) 9

25. 25 kg toshko'mir batamom yonganda qancha issiqlik (J) ajralib chiqadi? $q=2,7 \cdot 10^7 \text{ J/kg}$

A) $6,5 \cdot 10^8$ B) $6,75 \cdot 10^8$ C) $6 \cdot 10^8$ D) $5 \cdot 10^8$

26. Chastotasi 5 MGs bo'lgan to'liqin suvga tushganida qanday chastotada (MGs) bo'ladi?

A) 4 B) 6 C) 3 D) 5

27. 400 K temperaturada bosim 16,62 kPa dan oshmasligi uchun 4 mol gaz saqlanadigan idishning sig'imi (m^3) qancha bo'lishi kerak?

A) 0,8 B) 2,1 C) 1 D) 1,2

28. Tebranish konturi sig'imi 200 pF bo'lgan kondensator va induktivligi 10 mH bo'lgan g'altakdan iborat. Agar tok kuchi amplitudasi 1,0 A bo'lsa, kuchlanish amplitudasini (V) toping.

A) 7290 B) 7380 C) 7200 D) 7070

29. Normal sharoitda bitta gaz molekulasi ilgariharakating o'rtacha kinetik energiyasini (J) hisoblang.
A) $7,54 \cdot 10^{-20}$ B) $5,74 \cdot 10^{-21}$ C) $5,7 \cdot 10^{-20}$
D) $7,54 \cdot 10^{-21}$
30. 120 V ga mo'ljallangan 40 Vt li lampochka 220 V li tarmoqqa ulanganda normal yonishi uchun unga ketma-ket qilib necha metr $3 \cdot 10^{-4}$ m diametrli nixrom simdan ulash kerak bo'ladi? Nixromning solishtirma qarshiligi $1,1 \cdot 10^{-6}$ Om·m.
A) 19,3 B) 9,3 C) 15,3 D) 10,6
31. Metall sirtiga to'lqin uzunligi $0,15 \mu\text{m}$ bo'lgan yorug'liq tushayapti. Agar fotoeffektning qizil chegarasi $0,2 \mu\text{m}$ bo'lsa foton energiyasining qancha qismi (%) kinetik energiyasiga aylanadi?
A) 100 B) 50 C) 25 D) 40
32. Suyuqlikning idish devoriga bosim kuchi F idish tubiga bo'lgan bosim kuchiga teng bo'lishi uchun R radiusli silindrik idishga qanday balandlik H gacha suv qiyish kerak?
A) $R = H$ B) $R = H/2$ C) $R = 2H$
D) $R = 4H$
33. Mashina birinchi 10 minutda 500 m yo'l bosdi. U shu tezlik bilan 0,5 soatda qancha yo'l (m) o'tadi?
A) 1500 B) 1667 C) 3000 D) 166,6
34. Qarshiligi $0,5 \omega$ bo'lgan o'tkazgichdan yasalgan yopiq kontur bilan chegaralangan sirtidan o'tuvchi magnit oqimi $0,2 \text{ mVb}$ dan 1 mVb gacha tekis ortdi. O'tkazgichning kesimidan qancha zaryad (mKl) o'tgan?
A) 1,8 B) 1,6 C) 2,4 D) 3,2
35. Yerni radiusi 6380 km bo'lgan shar deb hisoblab, 1 kg massali jism vaznining jismni qutbdan ekvatorga ko'chirilgandagi o'zgarishini (N) aniqlang.
A) -0,034 B) -0,26 C) 0,34 D) -0,043
36. Muz parchasi suv sirtidan 2 sm chiqqan holda suzib yuribdi. Muz parchasi asosining yuzi 200 sm^2 bo'lsa, uning og'irligi (N) qancha? Muzning zichligi $0,9 \text{ g/sm}^3$.
A) 45 B) 3,6 C) 90 D) 35
1. Choose the answer which correctly completes the sentence.
"Do you know Edward?" they asked me.
They asked me ... Edward.
A) *do you know* B) *if I know*
C) *whether I knew* D) *did I know*
2. Choose the answer which correctly completes the sentence.
We need to be home early today so we ... at 3.30
A) *will leave* B) *leave* C) *have left*
D) *are leaving*
3. Choose the answer which correctly complete the sentence.
Can he speak French or German? ... He is not good at languages.
A) *Either.* B) *Any.* C) *Neither.* D) *None.*
4. Choose the answer which correctly completes the sentence.
When did you ... the books back?
A) *can give* B) *had to give* C) *have to give*
D) *must give*
5. Choose the answer which correctly completes the sentence.
Once he was skiing too fast down a mountain, when he crashed into ... tree.
A) - B) *an* C) *a* D) *the*
6. Choose the answer which correctly completes the sentence.
Once a busy city, Pompeii was destroyed by the eruption of ... Mount Vesuvius in 79 A.D.
A) *a* B) *the* C) - D) *an*
7. Choose the answer which correctly complete the sentence.
The secretary said that she ... a reservation for me at the hotel.
A) *has made* B) *had made* C) *will make*
D) *made*
8. Choose the answer which correctly completes the sentence.
Water that has had the minerals ... is called "soft" water.
A) *removing* B) *removed* C) *to remove*
D) *removes*

9. Choose the answer which correctly completes the sentence.
Heavy rains burst Whitton Dam two days ago. The flooded houses are still ...
A) *evacuating* B) *evacuate* C) *evacuated*
D) *being evacuated*
10. Choose the answer which correctly completes the sentence.
If we want to get there by 7.00, that means ... before 5.00.
A) *will get up* B) *gets up* C) *getting up*
D) *get up*
11. Choose the answer which correctly completes the sentence.
I advise you to buy a Volkswagen Volkswagen cars are cheap, they last a long time.
A) *even though* B) *because* C) *as*
D) *despite*
12. Choose the answer which correctly completes the sentence.
Why did you say that Paul ... a careful driver?
A) *isn't* B) *hasn't* C) *were*
D) *hadn't been*
13. Choose the answer which correctly complete the sentence.
Our car stopped on the halfway to the city. We couldn't go ... because we had no petrol left.
A) *farthest* B) *far* C) *farther* D) *further*
14. Choose the answer which correctly completes the sentence.
You'd better leave by the side door ... someone is watching us.
A) *unless* B) *so that* C) *in case*
D) *in order that*
15. Choose the answer which correctly completes the sentence.
Our guests didn't leave until 2 a.m., so they ... have enjoyed themselves.
A) *must* B) *can't* C) *ought* D) *should*
16. Choose the answer which correctly completes the sentence.
Now when he's back to his home town it feels ... to be working in his old school.
A) *strange* B) *strangeness* C) *stranger*
D) *strangely*
17. Choose the answer which correctly completes the sentence.
You'd better take a sweater with you now ... it gets cold tonight.
A) *while* B) *because of* C) *in case*
D) *during*
18. Choose the answer which correctly completes the sentence.
Even though a great deal of the lawn is open to the sun, there are ... of shade trees to make it comfortable.
A) *no* B) *plenty* C) *none* D) *some*
19. Choose the answer which correctly complete the sentence.
Fatima wouldn't have overslept if her alarm-clock ... slow.
A) *hadn't been* B) *weren't* C) *wasn't*
D) *hasn't been*
20. Choose the answer which correctly completes the sentence.
She wouldn't have got wet if she ... her umbrella.
A) *would take* B) *takes* C) *took*
D) *had taken*
21. Change the sentence into the Passive Voice.
His colleagues started to respect Tim.
A) *Tim started to respected by his colleagues.*
B) *Colleagues started to be respected.*
C) *Tim started to be respected by his colleagues.*
D) *Tim respected by colleagues.*
22. Choose the answer which correctly completes the sentence.
The faster you drive, ... dangerous it is.
A) *most* B) *the more* C) *the most*
D) *more*

23. Choose the answer which correctly complete the sentence.

Today the world ... so rapidly, things never stay the same.

- A) *is changing* B) *has been changing*
C) *changes* D) *has changed*

Read the text. Then choose the correct answer to question 24-26.

In the past, before technology was used to monitor the weather accurately, people looked at the skies, watched how animals and plants behaved, and relied on signs and superstitions to forecast the weather. Indeed, some people still believe that, when cows lie down or a cat sneezes, it is going to rain. Nowadays, scientists who study the weather, called meteorologists, use many different methods to make their forecasts. Satellites monitor our weather and send information to computers at special processing stations. On the ground, weather stations all over the world record wind speeds and directions, temperature, clouds and air pressure.

24. It is clear from the passage that reasonably accurate weather forecasting ...
- A) *is now available worldwide.*
B) *is of little importance to most people in the world.*
C) *does not require much technological assistance.*
D) *is just one stage in an effort to control the climate.*
25. As is pointed out in the passage, before the coming of technology, ...
- A) *people weren't really interested in weather conditions.*
B) *several methods were used in an effort to forecast the weather.*
C) *the methods used to forecast the weather are all now regarded as completely useless.*
D) *the only way to learn about the weather was through the behaviour of plants and animals.*

26. According to the passage, it is now possible, with the aid of technology, to forecast the weather, but ...

- A) *changing wind speeds can affect predictions.*
B) *much relevant material is never processed.*
C) *it is still a very complex process.*
D) *long-term forecasts are still far from accurate.*

Read the text. Then choose the correct answer for the gaps 27-28 in the text.

The Star Tree hotel chain is in financial trouble and some of their smaller hotels are going to have to be sold. Rising costs are being blamed (27)... recent losses and many smaller hotels (28)... to have been losing money for many years. No buyer has yet been found for the properties.

- 27.
- A) *with* B) *to* C) *for* D) *about*
- 28.
- A) *have reported* B) *are reporting*
C) *been reported* D) *are reported*

Read the text. Then choose the correct answer for the gaps 29-31 in the text.

Consumers are creatures of habit: they buy the same products time and time again, and such is their (29)... with big brands, and the colours and logos that represent them, that they can register a brand they like with barely any conscious thought process. The packaging of consumer products (30)... therefore crucial vehicle for delivering the brand and the product (31)... our shopping baskets.

- 29.
- A) *familiarly* B) *familiar* C) *familiarize*
D) *familiarity*
- 30.
- A) *have been* B) *is* C) *are* D) *will be*

31.

- A) of B) towards C) with D) into

Read the text. Then choose the correct answer to questions 32-33.

Launched on October 4, 1957, Sputnik 1 was the first craft in orbit around the earth. Named from the Russian phrase for "traveling companion of the world" (Sputnik Zemli), it was a small satellite measuring only 58 cm across. It circled the earth once 96,2 minutes and transmitted information about the earth's atmosphere. After 57 days in space, it re-entered the atmosphere and was destroyed.

This historic launch began an era of intensive space programmes by both the Soviet Union and the United States. In the next three decades, hundreds of probes, satellites, and other missions were to follow Sputnik on the quest to explore both the wonders and the practical potential of space.

32. What is the main idea of the text?

- A) *Sputnik 1's crash on re-entry delayed other explorations.*
 B) *The main role of satellites is to send information from space.*
 C) *United States tried hard to launch their own satellite.*
 D) *The success of Sputnik 1 exploration.*

33. How long did Sputnik 1 stay in space?

- A) 57 days B) 4 days C) 96,2 minutes
 D) 58 minutes

Read the text. Then choose the correct answer to question 34-36.

Of the six outer planets, Mars, commonly called the Red Planet, is the closest to Earth. Mars, 4,200 miles in diameter and 55% of the size of Earth, is 34,600,000 miles from Earth, and 141,000,000 miles from the Sun. It takes this planet, along with its two moons, Phobos and Deimos, 1,88 years to circle the Sun, compared to 365 days for the Earth.

For many years, Mars had been thought of as the planet with the man-made canals, supposedly discovered by an Italian astronomer, Schiaparelli, in 1877. With the United States spacecraft Viking I's landing on Mars in 1976, the man-made canal theory was proven to be only a myth.

Viking I, after landing on the soil of Mars, performed many scientific experiments and took numerous pictures. The pictures showed that the red colour of the planet is due to the reddish, rocky Martian soil. No biological life was found, though it had been speculated by many scientists. The Viking also monitored many weather changes including violent dust storms. Some water vapour, polar ice and permafrost (frost below the surface) were found, indicating that at one time there were significant quantities of water on this distant planet. Evidence collected by the spacecraft shows some present volcanic action, though the volcanoes are believed to be dormant if not extinct.

34. Which of the following is not true?

- A) *Mars is larger than Earth*
 B) *Mars has two moons*
 C) *Martian soil is rocky*
 D) *It takes longer for Mars to circle the Sun than it takes Earth*

35. Man-made canals were supposedly discovered by ...

- A) *Phobos* B) *Schiaparelli* C) *Martian*
 D) *Viking I*

36. Mars has been nicknamed as ...

- A) *The Red Planet* B) *Viking I* C) *Deimos*
 D) *Martian*